



**KONICA MINOLTA**

## **OpenAPI Application Manager**

**KONICA MINOLTA, INC.**

<b>Edition</b>	<b>Date</b>
Version 3.1	2008/08/19
Version 3.2.0	2008/10/01
Version 3.3.0	2010/08/31
Version 3.3.1	2010/12/24
Version 4.0 beta	2011/02/04

**KONICA MINOLTA, INC. OpenAPI Project**  
**-----Strictly Confidential-----**

## History

[illegible]

**KONICA MINOLTA, INC. OpenAPI Project**  
**-----Strictly Confidential-----**

**INDEX**

1 Introduction .....	4
1.1 Purpose .....	4
1.2 Overview .....	4
2 System Configuration .....	5
2.1 Operation Environment .....	5
2.2 Main screen .....	6
2.2.1 Applications Tab .....	7
2.2.2 MFP Actions Tab .....	8
2.2.3 MFP Details Tab .....	9
2.2.4 Application Settings .....	12
2.3 MFP Select Screen .....	13
2.4 Get Application ID .....	14
2.5 Application Details .....	15
3 Operation Procedure .....	16
3.1 MFP search .....	16
3.1.1 Search settings .....	16
3.1.2 Search .....	16
3.1.3 Advanced Search .....	18
3.2 Get Application List .....	19
3.3 Get Application Details .....	20
3.4 Delete application .....	21
3.5 Gets/Sets MFP Authentication Mode .....	22
3.6 Gets/Sets Panel Button (External Apps Button) Name .....	23
3.7 Gets MFP Detail Information .....	24

## **1 Introduction**

### **1.1 Purpose**

This document explains how to manage OpenAPI Application in MFP with OpenAPI Application Manager (hereinafter referred to as “this tool”).

### **1.2 Overview**

This tool is to manage the OpenAPI Applications that are registered with MFP. Following are the key functions used by this tool.

- MFP search
- Get Application List
- Get Application Details
- Delete Application
- Get/Set MFP authentication mode
- Get/Set Panel Button (External Apps Button) Name
- Get MEP details
- Identifying the status of IOption and Extended Memory in MFP

**KONICA MINOLTA, INC. OpenAPI Project**  
**-----Strictly Confidential-----**

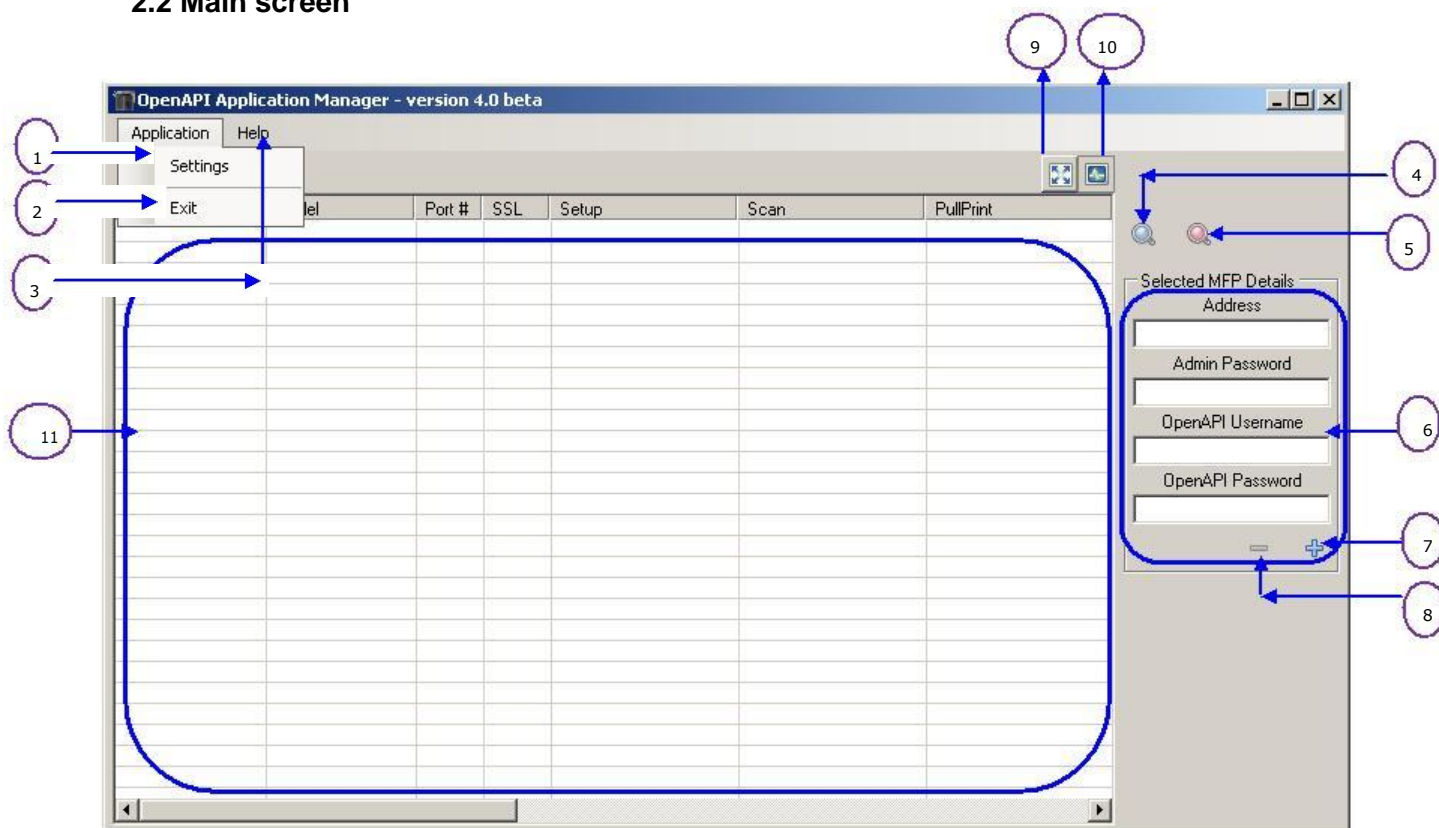
## 2 System Configuration

### 2.1 Operation Environment

Item	Description
Operating System	•Windows 2000 Professional (SP4) •Windows XP Professional Edition(SP2)
Library	Microsoft .NET Framework 2.0

**KONICA MINOLTA, INC. OpenAPI Project**  
**-----Strictly Confidential-----**

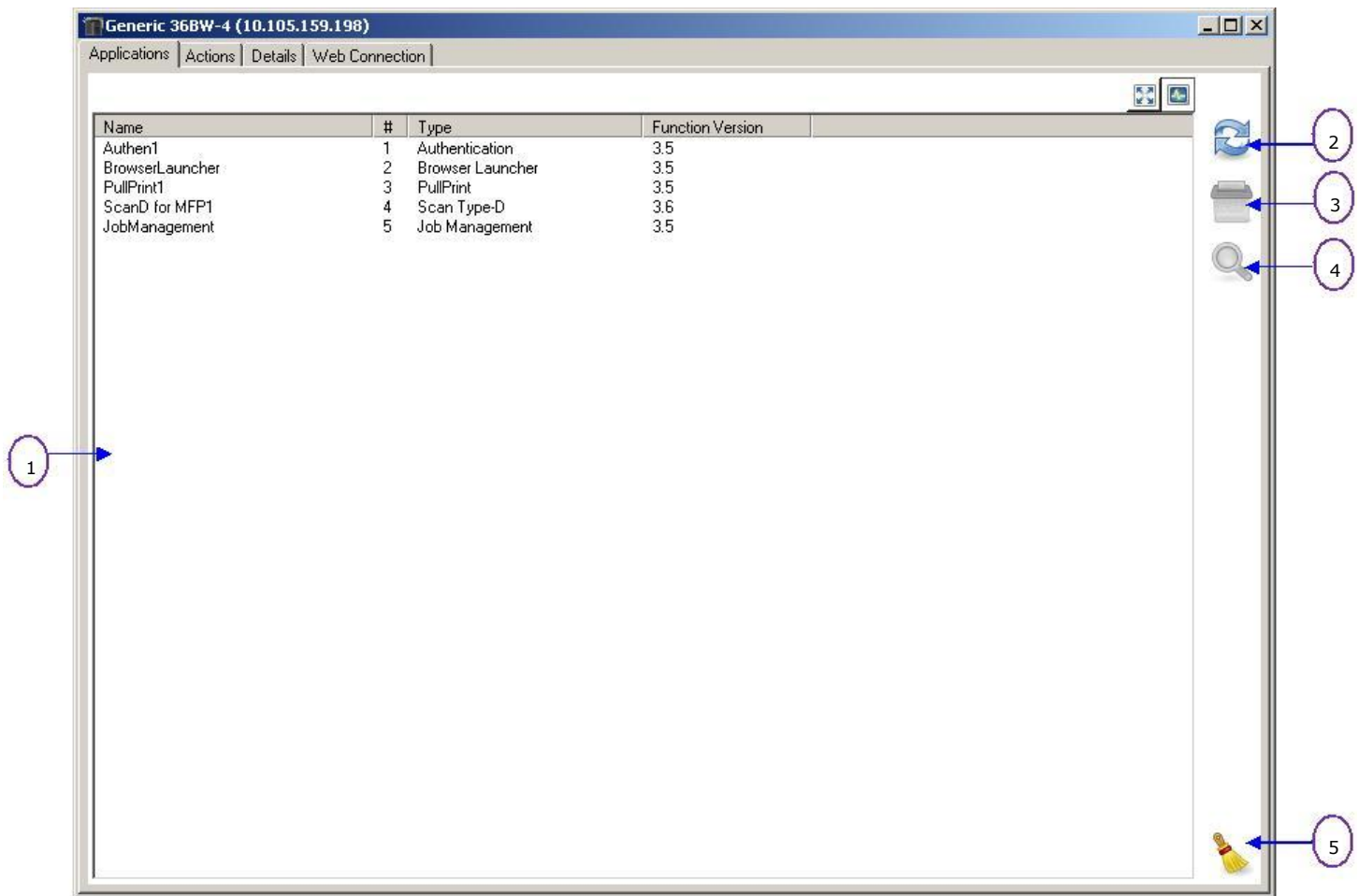
## 2.2 Main screen



No.	Item	Type	Explanation
1	Application ->Settings	Menu	To set UPNP, SNMP Broadcast or SNMP Ping
2	Application ->Exit	Menu	Close the application.
3	Help -> About	Menu	Show the information about application.
4	Search MFP	Button	Searches MFP.
5	Advanced Search MFP	Button	Searches MFP with some options like SSL, Color, FunctionVersion and soon
6	Selected MFP Details	GroupBox and TextBox	Display the selected MFP details.
7	Add MFP	Button	Add new MFP.
8	Remove MFP	Button	Remove the existing MFP.
9	Icon View	Button	Display the information with icon view.
10	Details View	Button	Display the information with details view.
11	MFP Display Area	List View	Display the MFP's with detailed information in various columns of list view.

**KONICA MINOLTA, INC. OpenAPI Project**  
**-----Strictly Confidential-----**

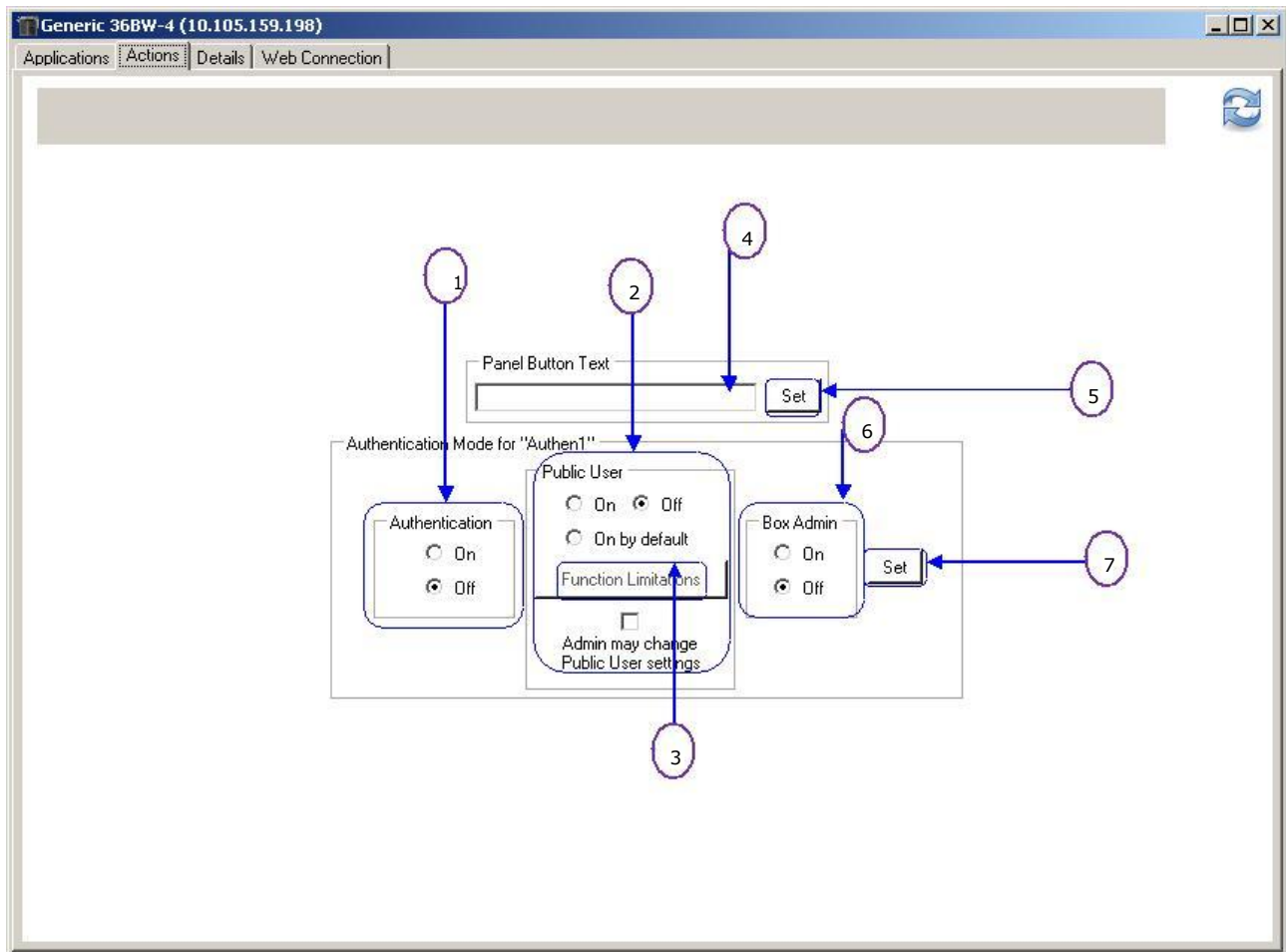
## 2.2.1 Applications Tab



No.	Item	Type	Explanation
1	Application List	List	List of registered application for MFP.
2	Refresh the App List	Button	Gets a list of application from target MFP.
3	Delete	Button	Deletes the selected application in Application List from target MFP.
4	Get Details	Button	Get Application Details
5	Delete All	Button	Deletes all applications from target MFP.

**KONICA MINOLTA, INC. OpenAPI Project**  
**-----Strictly Confidential-----**

## 2.2.2 MFP Actions Tab



No.	Item	Type	Explanation
1	Authentication Mode Get	Radio Button	Set Authentication Mode from target MFP.
2	Public User Setting	Radio Button	Set Whether Public User is allowed to login during authentication.
3	Function Limitations	Button	Allow to Set Public User Function Limitation.
4	Panel Button Name	Text	Get/Set Panel Button name
5	Panel Button Name Set	Button	Sets Panel Button (External Apps Button) Name to target MFP. Panel Button will not get displayed on the panel when not even one application is registered in the MFP.
6	Box Admin Setting	Radio Button	Set Whether Box Admin is allowed to login during authentication.
7	Box Admin Setting Set	Button	Sets Box Admin Setting to target MFP.



## 2.2.3 MFP Details Tab

### 2.2.3.1 Device Information

Generic 36BW-4 (10.105.159.198)

Applications | Actions | **Details** | Web Connection

**Device Information** | OpenAPI Information | Raw Data

Product Name  
Generic 36BW-4

Authentication Devices Connected

Authentication Setting  
None

Can Print Colour ✗    Can Scan Colour ✓

HDD Installed ✓    ADF Installed ✗    USB Host Board Installed ✓

Copy ✓    Scan ✓    Print ✓

Fax ✗    Fax (2nd Line) ✗

Internet Fax ✓    IP Address Fax ✗    SIP Fax ✗

65535 colour Control Panel

Physical Size 800x480

Logical Size 800x480

Panel Language  
English

Interpreters

PCL 5c (-)  
PCL XL (3.0)  
PostScript Level3 (3016)  
PDF (1.7)  
TIFF (6.0)  
XPS (1.0)

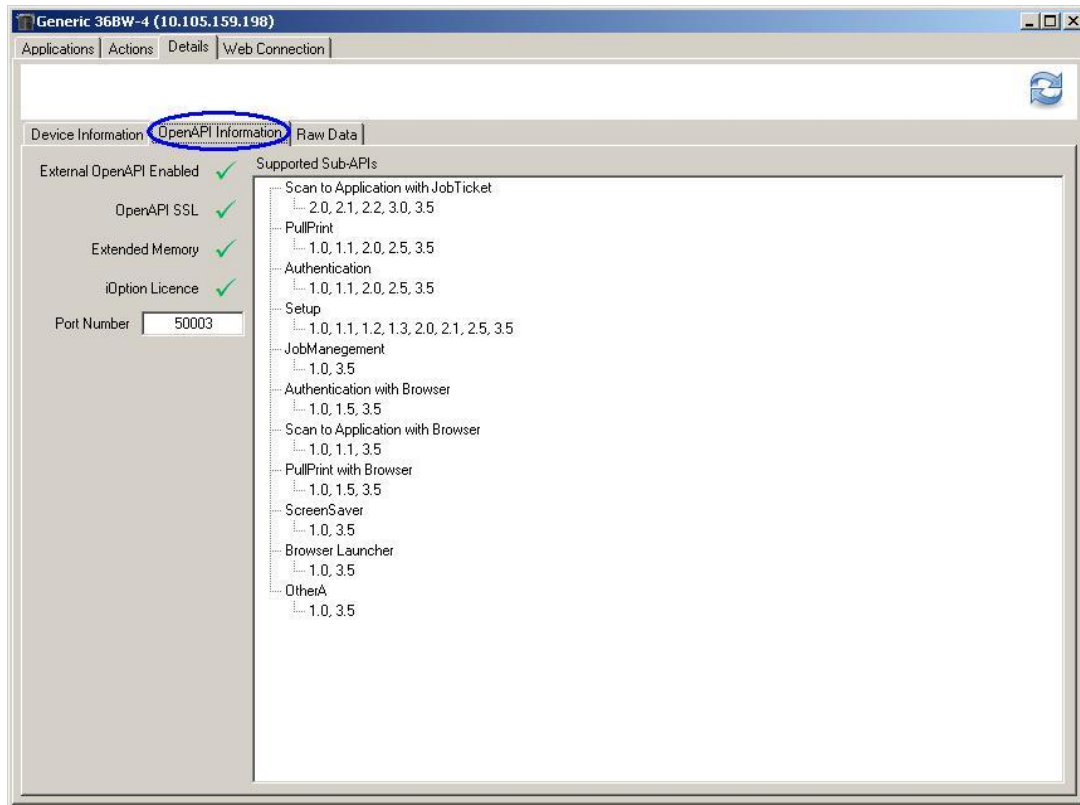
MAC Address  
00:20:6B:7C:97:51

1

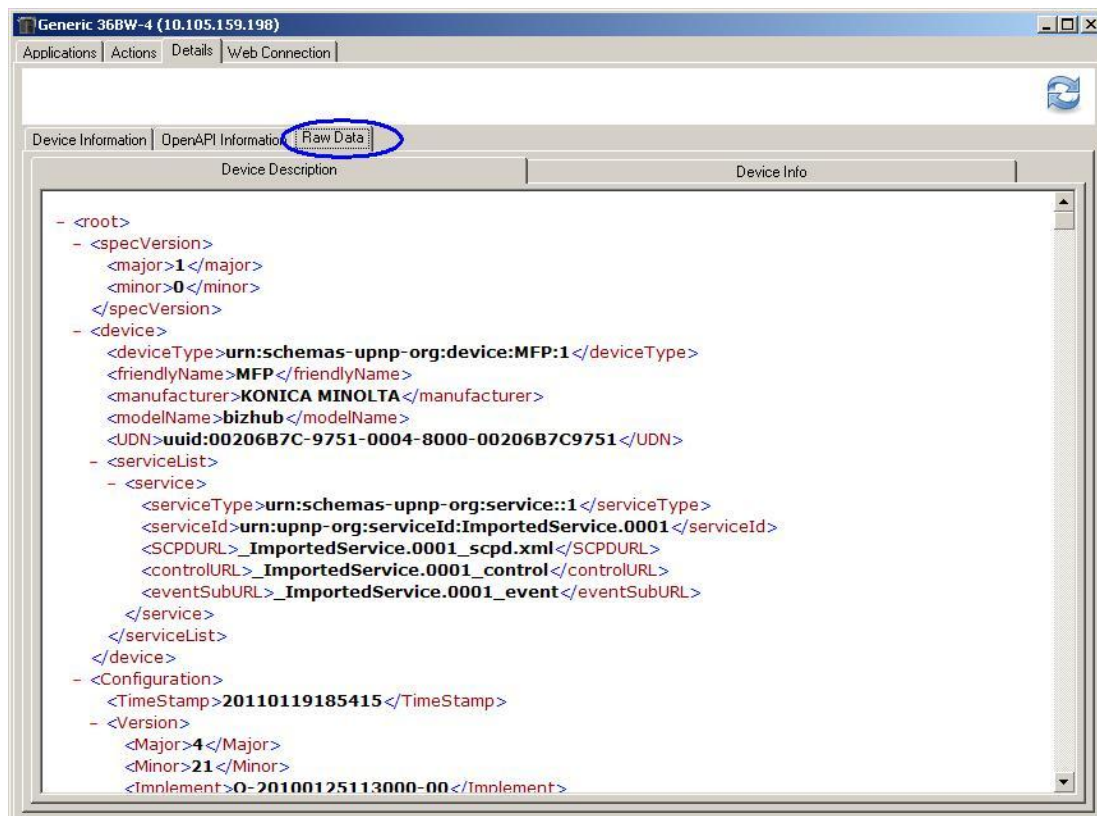
No.	Item	Type	Explanation
1	Refresh	Button	Get MFP details from target MFP and refresh the tab page.

**KONICA MINOLTA, INC. OpenAPI Project**  
**-----Strictly Confidential-----**

### 2.2.3.2 OpenAPI Information

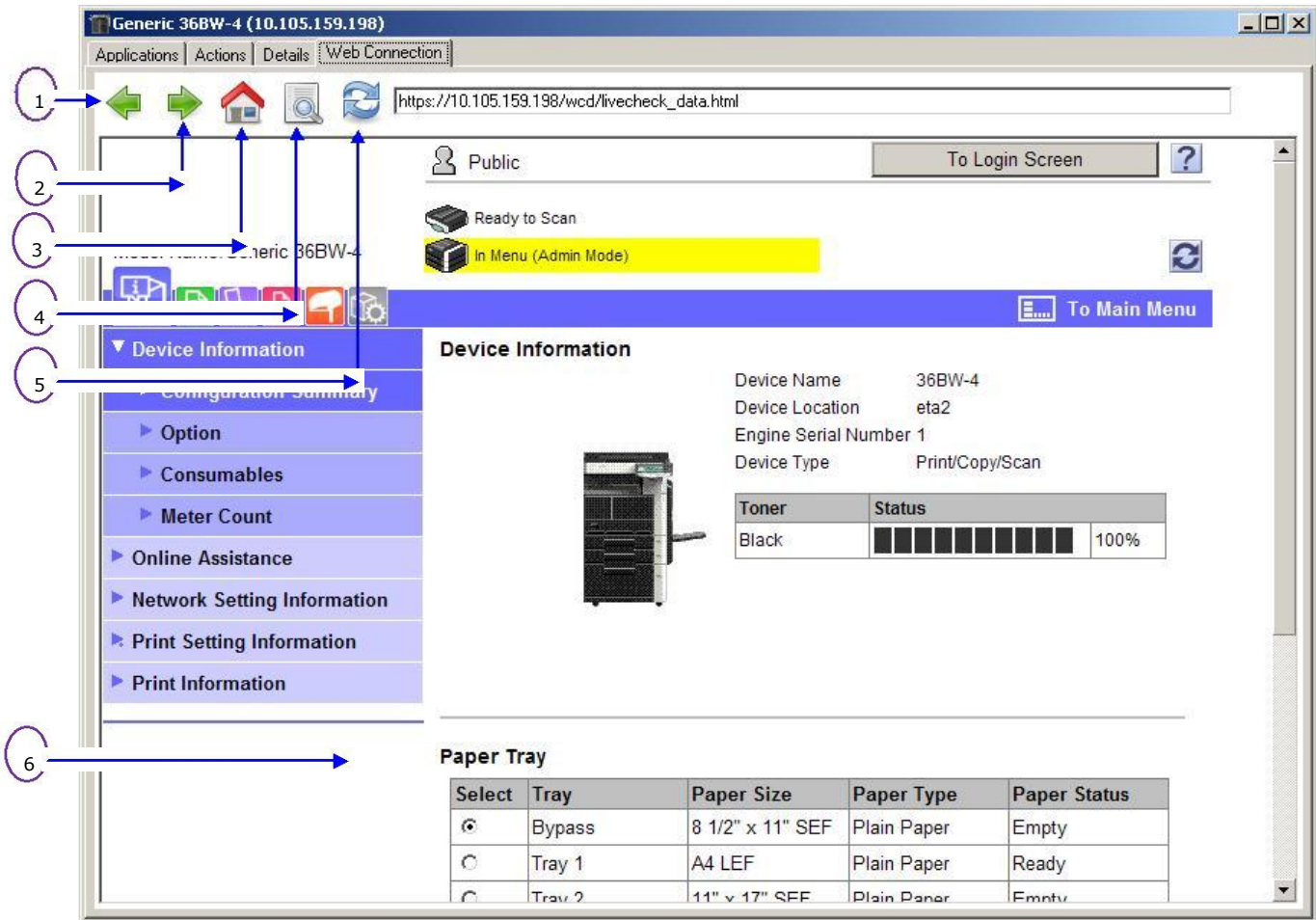


### 2.2.3.3 Raw Data



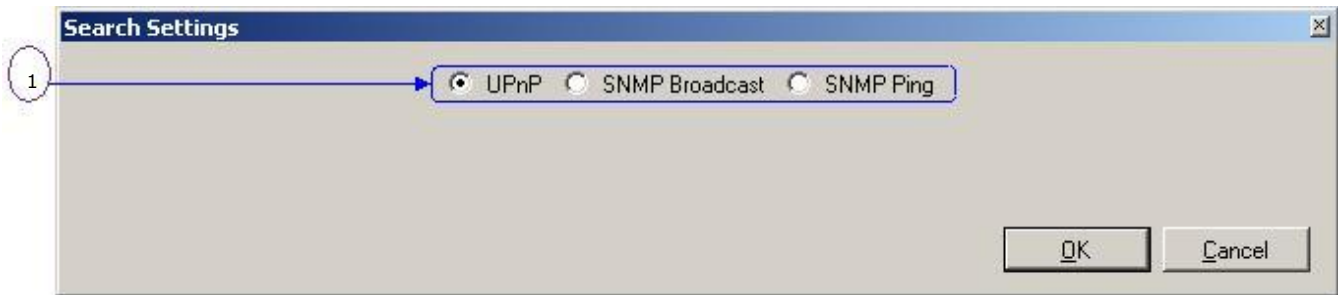
**KONICA MINOLTA, INC. OpenAPI Project**  
**-----Strictly Confidential-----**

### 2.2.3.4 Web Connection



No.	Item	Type	Explanation
1	Back	Button	Navigate to Previous Page.
2	Forward	Button	Navigate to Forward Page.
3	Home	Button	Navigate to Home Page.
4	Info	Button	Display Device Description.
5	Refresh	Button	Refresh Page.
6	Display Area	Browser Control	Display the retrieved details.

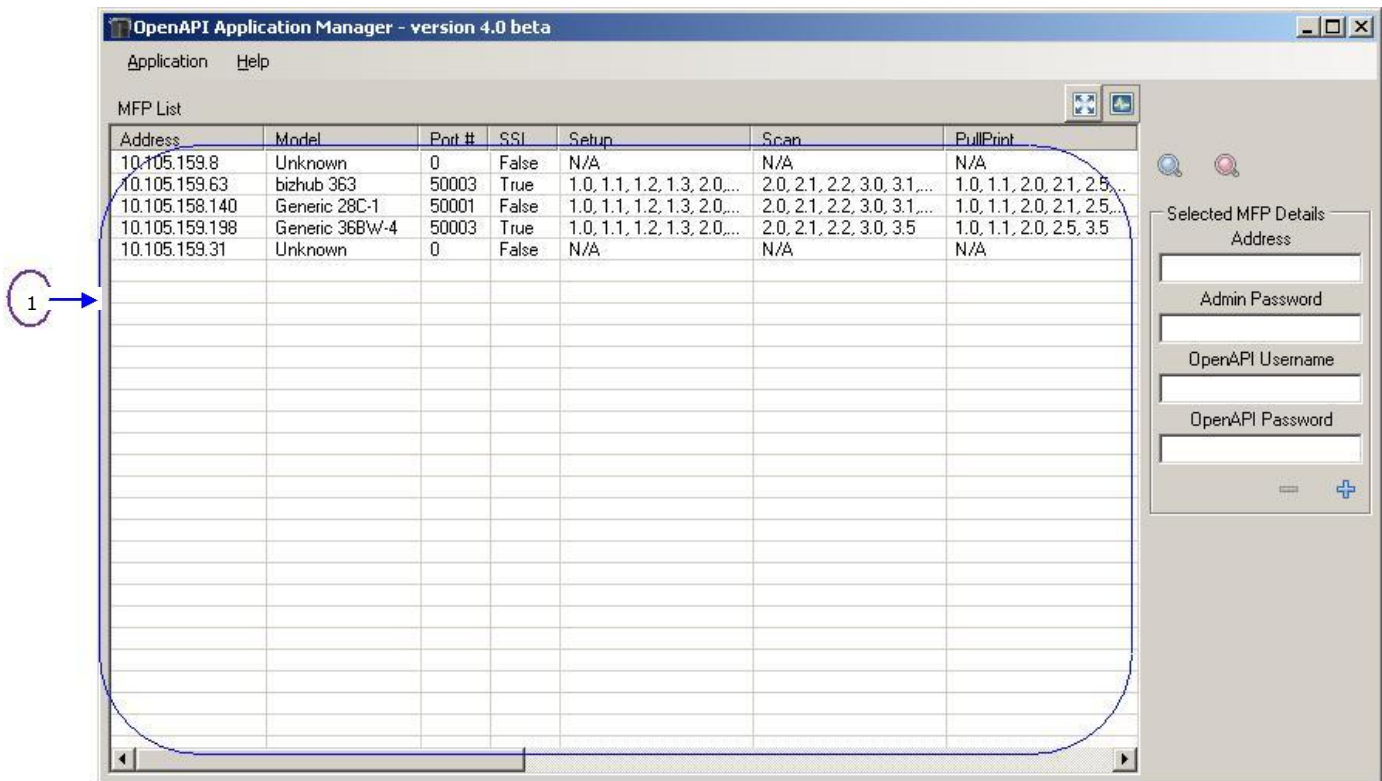
## 2.2.4 Application Settings



No.	Item	Type	Explanation
1	Search Setting	Radio Button	Search settings

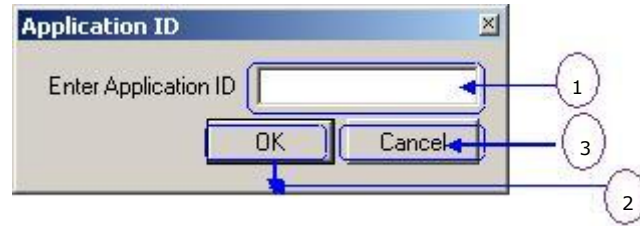
**KONICA MINOLTA, INC. OpenAPI Project**  
**-----Strictly Confidential-----**

### 2.3 MFP Select Screen



No.	Item	Type	Explanation
1	Discovery MFP List	List View	List of MFP found during search

## 2.4 Get Application ID



No.	Item	Type	Explanation
1	Application ID	TextBox	Application ID to be entered.
2	OK	Button	Sends the application ID to get the application details
3	Cancel	Button	Return to Main Screen

**KONICA MINOLTA, INC. OpenAPI Project**  
**-----Strictly Confidential-----**

## 2.5 Application Details

**Application Details**

Server details

Address: 10.105.159.98

Port Number: 50002

Timeout: 120

Server SSL: ✓

Authentication: Silent

AppNode: ABCD12

WithRelayServerAuthentication: ✗

Job notify server details

Job notify: ✓

Address: 10.105.159.98

Port Number: 50002

Job notify Server SSL: ✓

Close

No.	Item	Type	Explanation
1	Application Details	Group Box's	Display Application Details.
2	Close	Button	Return to Main Screen

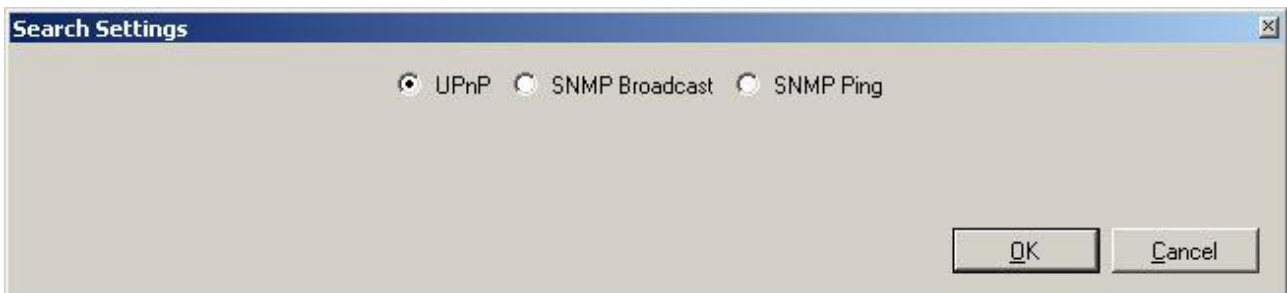
**KONICA MINOLTA, INC. OpenAPI Project**  
**-----Strictly Confidential-----**

### 3 Operation Procedure

#### 3.1 MFP search

##### 3.1.1 Search settings

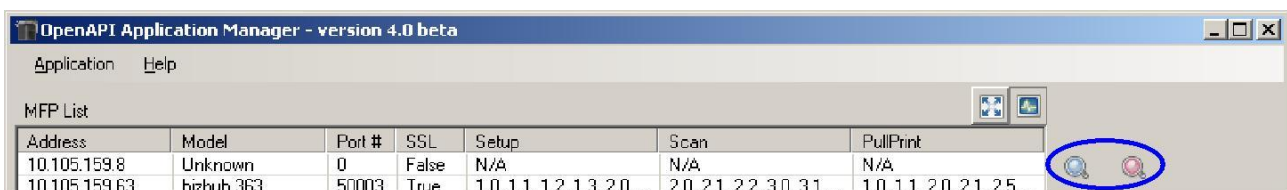
(1) Select menu Application -> Settings



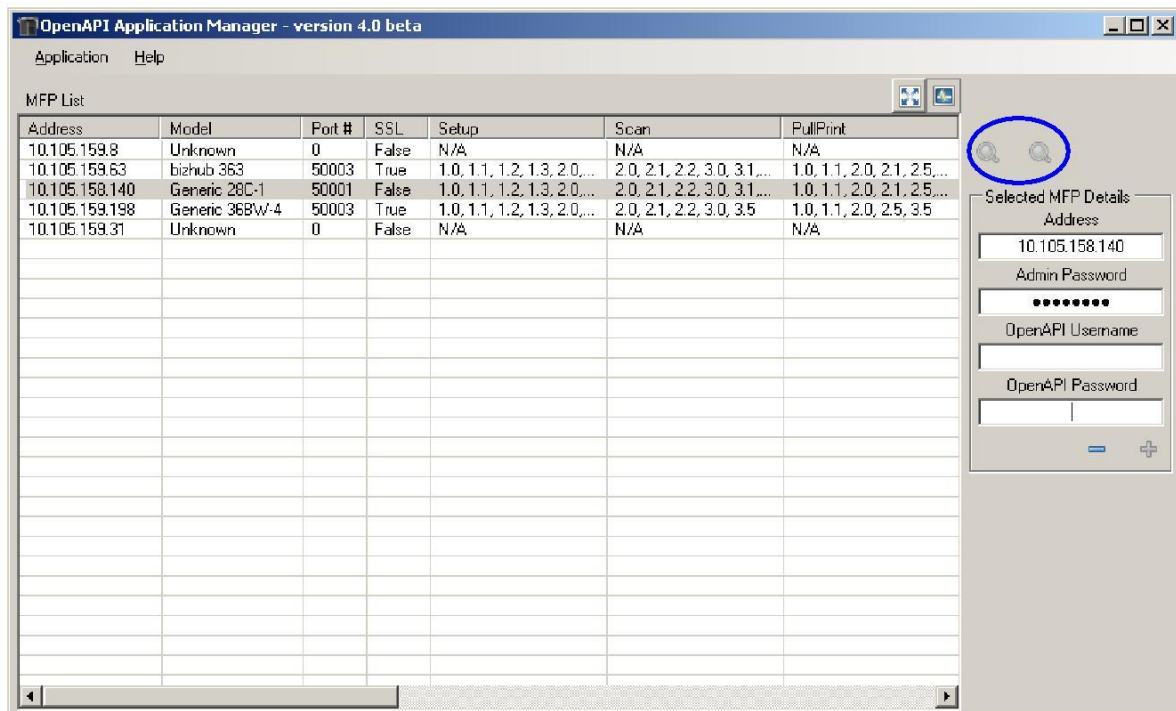
(2) Select search mode in Search Settings and do necessary parameter settings.

##### 3.1.2 Search

(1) Click Search button



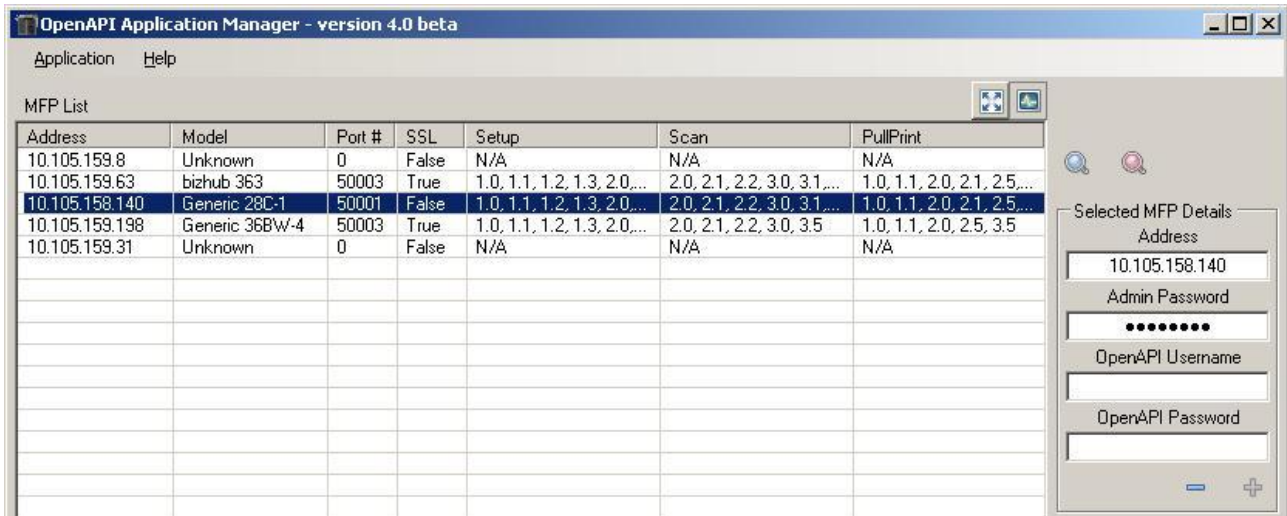
(2) During search, the Search button will be grayed out.



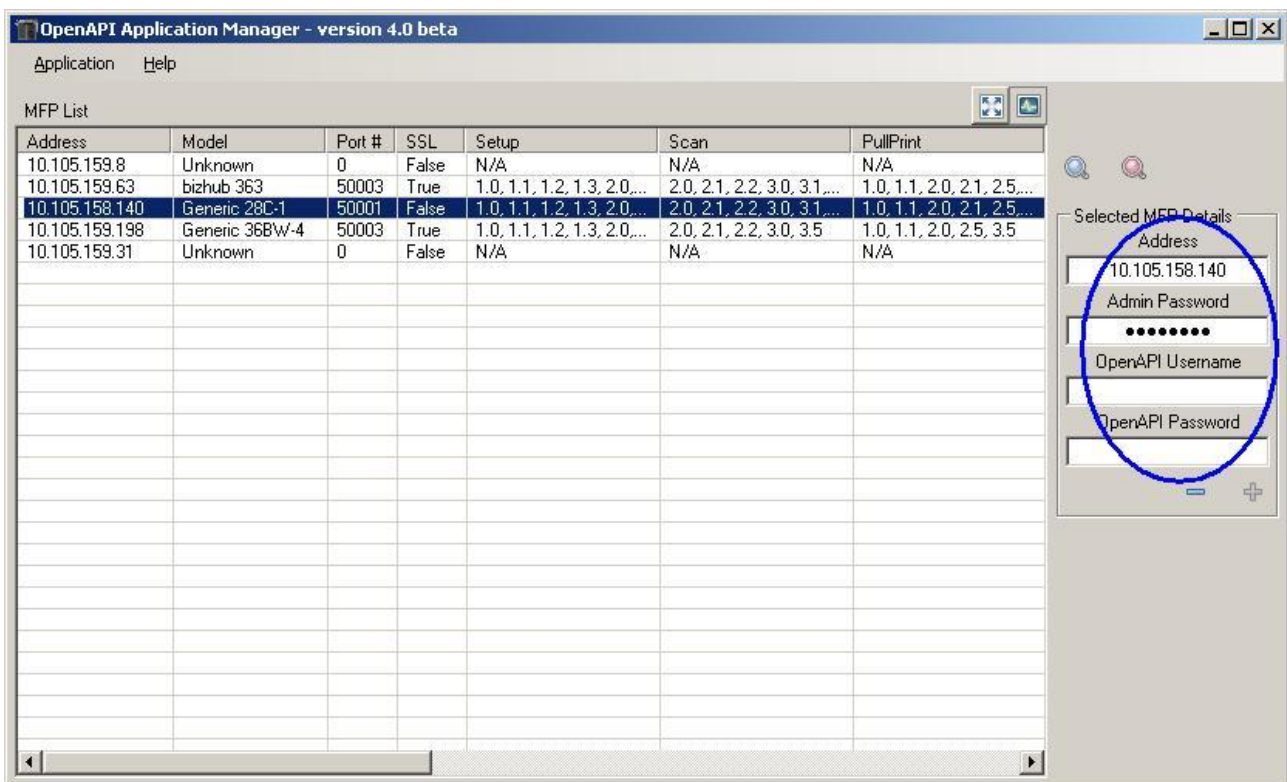


**KONICA MINOLTA, INC. OpenAPI Project**  
**-----Strictly Confidential-----**

(3) Once the search is complete, list of MFPs found are displayed as list.



(4) Selected MFP OpenApi Username, Password will be displayed like below,



(5) Double click the MFP targeted for management in the list view; it will update the entire information,

**KONICA MINOLTA, INC. OpenAPI Project**  
**-----Strictly Confidential-----**

### 3.1.3 Advanced Search

(1) Click Search button

**Advanced Search**

☒ **Function/Version**

From  To

☐ **Application**

☐ **Product Name**

☒ **SSL**

☒ **Color**

(2) Select the information needed to be search MFP.

(3) Click Search button, during search the Search button will be grayed out.

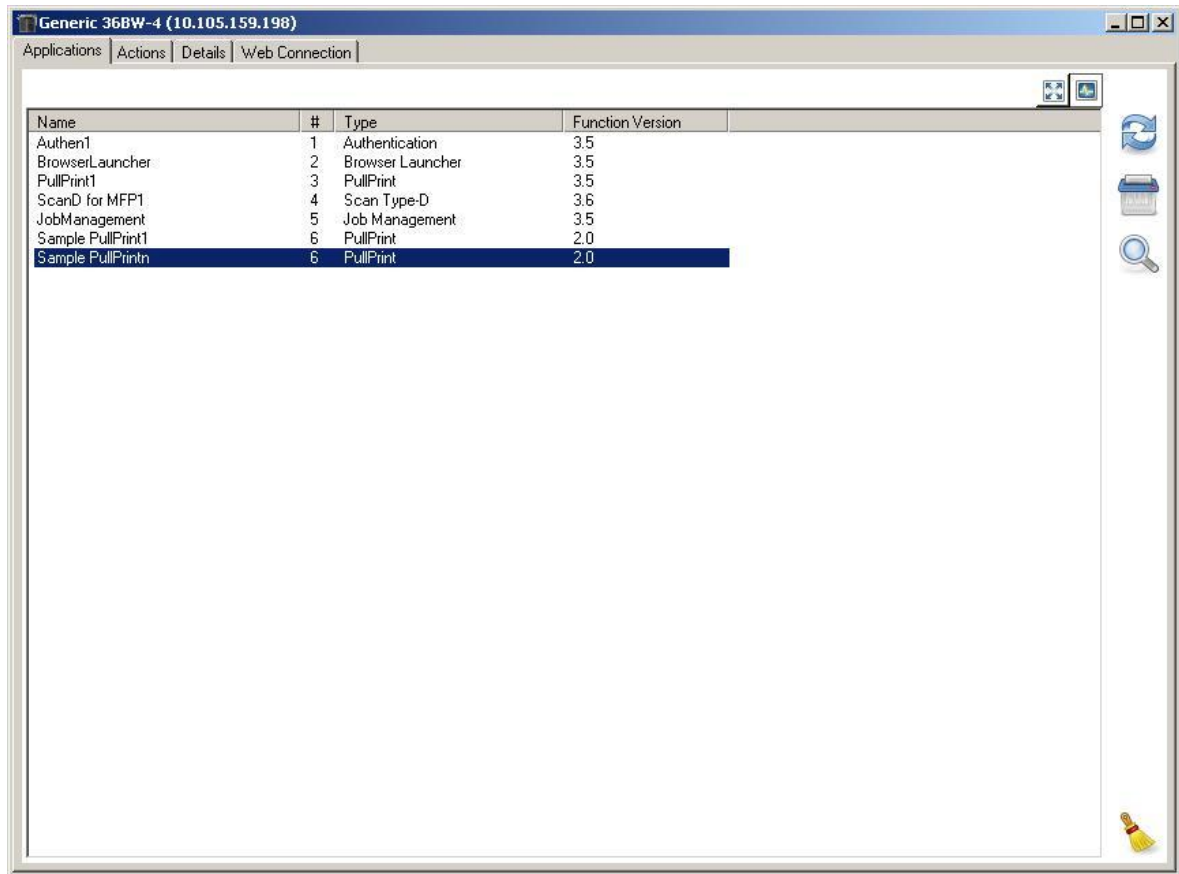
(4) Once the search is complete, list of MFPs found are displayed as list.


[illegible]

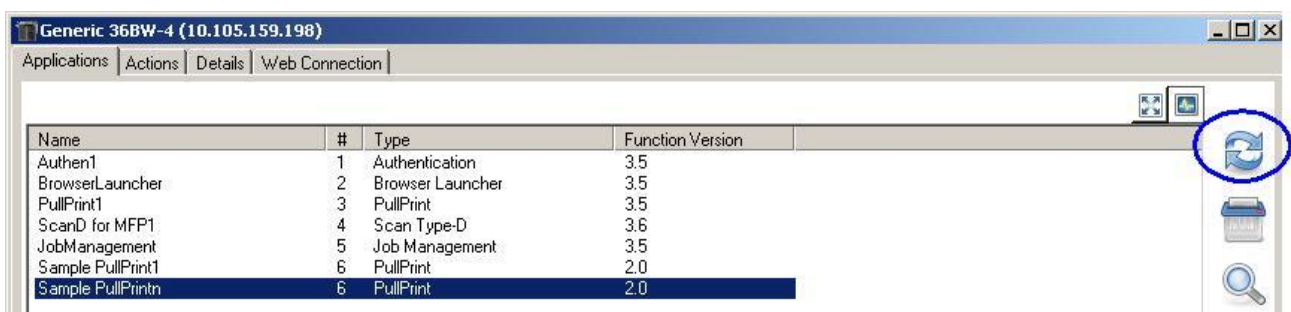
**KONICA MINOLTA, INC. OpenAPI Project**  
**-----Strictly Confidential-----**

### 3.2 Get Application List

(1) Displays registered applications in Applications Tab screen



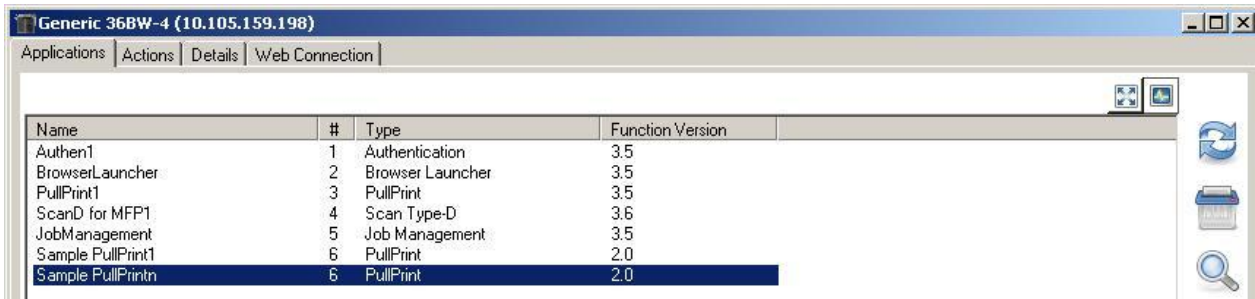
(2) Application list can be refreshed by clicking  button.



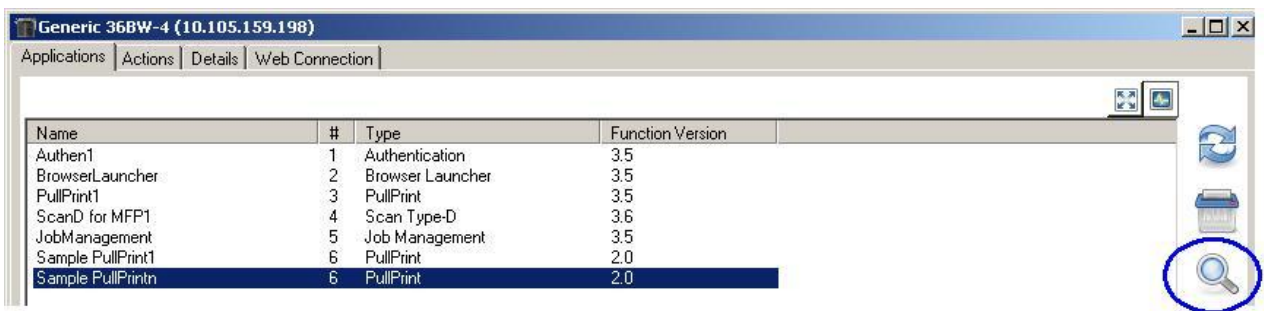
**KONICA MINOLTA, INC. OpenAPI Project**  
**-----Strictly Confidential-----**

### 3.3 Get Application Details

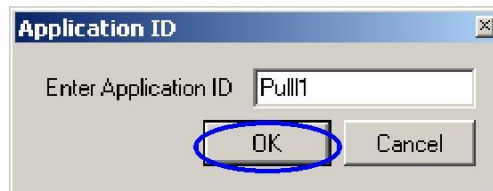
(1) Displays application list in the same procedure as 3.2 Get application list.



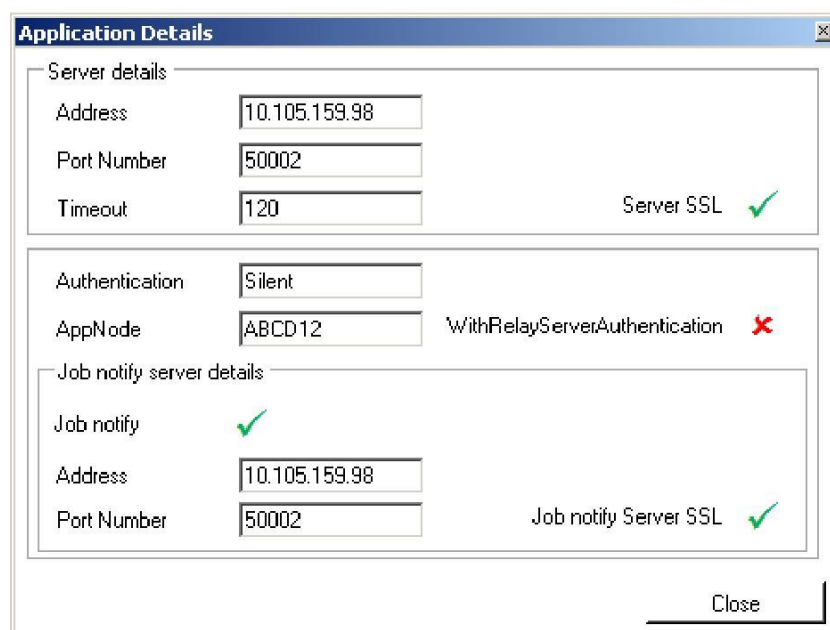
(2) Click the view application details button in the form,



(3) A Pop-up Screen is displayed. Enter the Application ID in the textbox and click "OK" button



(4) Application Details are displayed.




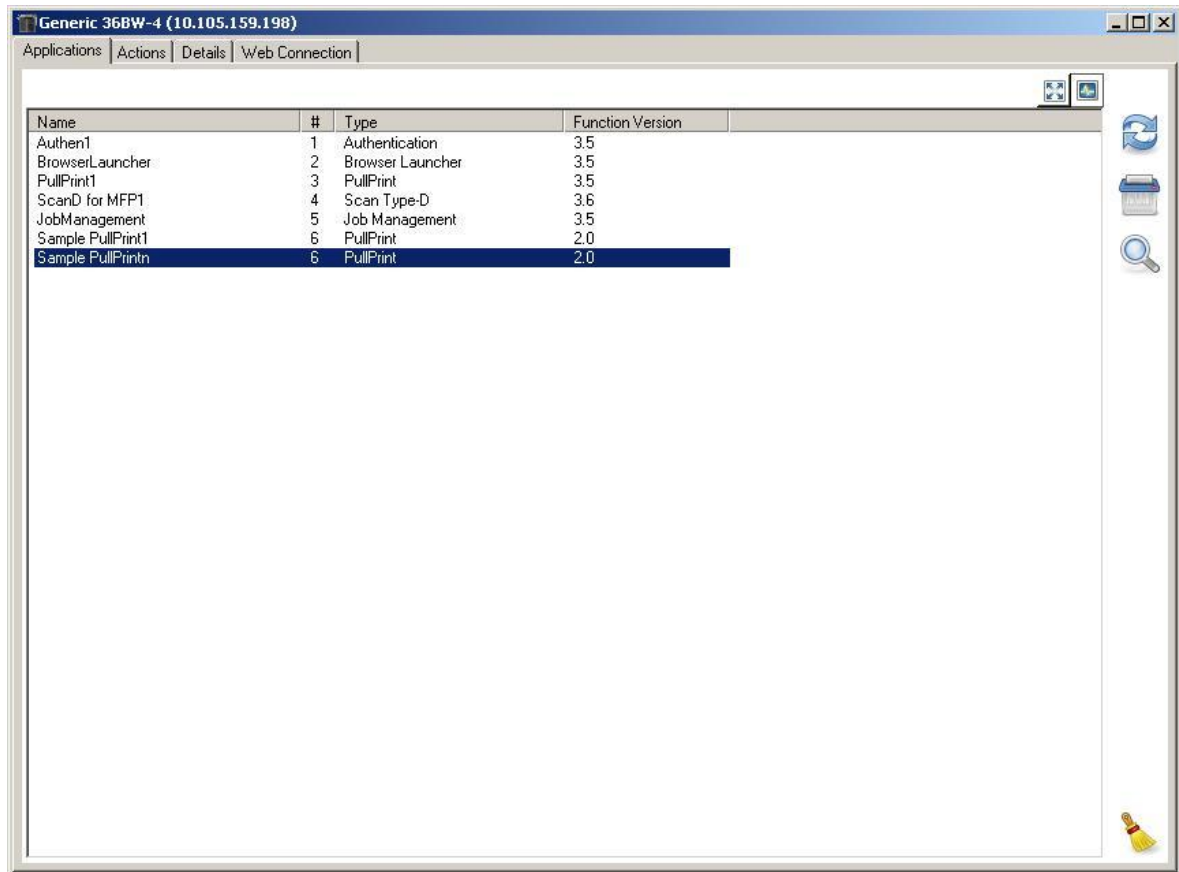
**KONICA MINOLTA, INC. OpenAPI Project**  
**-----Strictly Confidential-----**

### 3.4 Delete application

(1) Displays application list in the same procedure as 3.2 Get application list.

(2) Select the application to be deleted from the list and click  button.

Note: When all the listed application needs to be deleted, click  button.



**KONICA MINOLTA, INC. OpenAPI Project**  
**-----Strictly Confidential-----**

### 3.5 Gets/Sets MFP Authentication Mode

(1) Select MFP Actions Tab screen.

Generic 36BW-4 (10.105.159.198)

Applications Actions Details Web Connection

Panel Button Text

Set

Authentication Mode for "Authen1"

Authentication

☐ On

☒ Off

Public User

☐ On ☐ Off

☒ On by default

Function Limitations

☐ Admin may change Public User settings

Box Admin

☐ On

☒ Off

Set

(2) Display MFP authentication mode

Note: Public User and Box Admin login enable/disable settings cannot be got

Panel Button Text

Set

Authentication Mode for "Authen1"

Authentication

☐ On

☒ Off

Public User

☐ On ☐ Off

☒ On by default

Function Limitations

☐ Admin may change Public User settings

Box Admin

☐ On

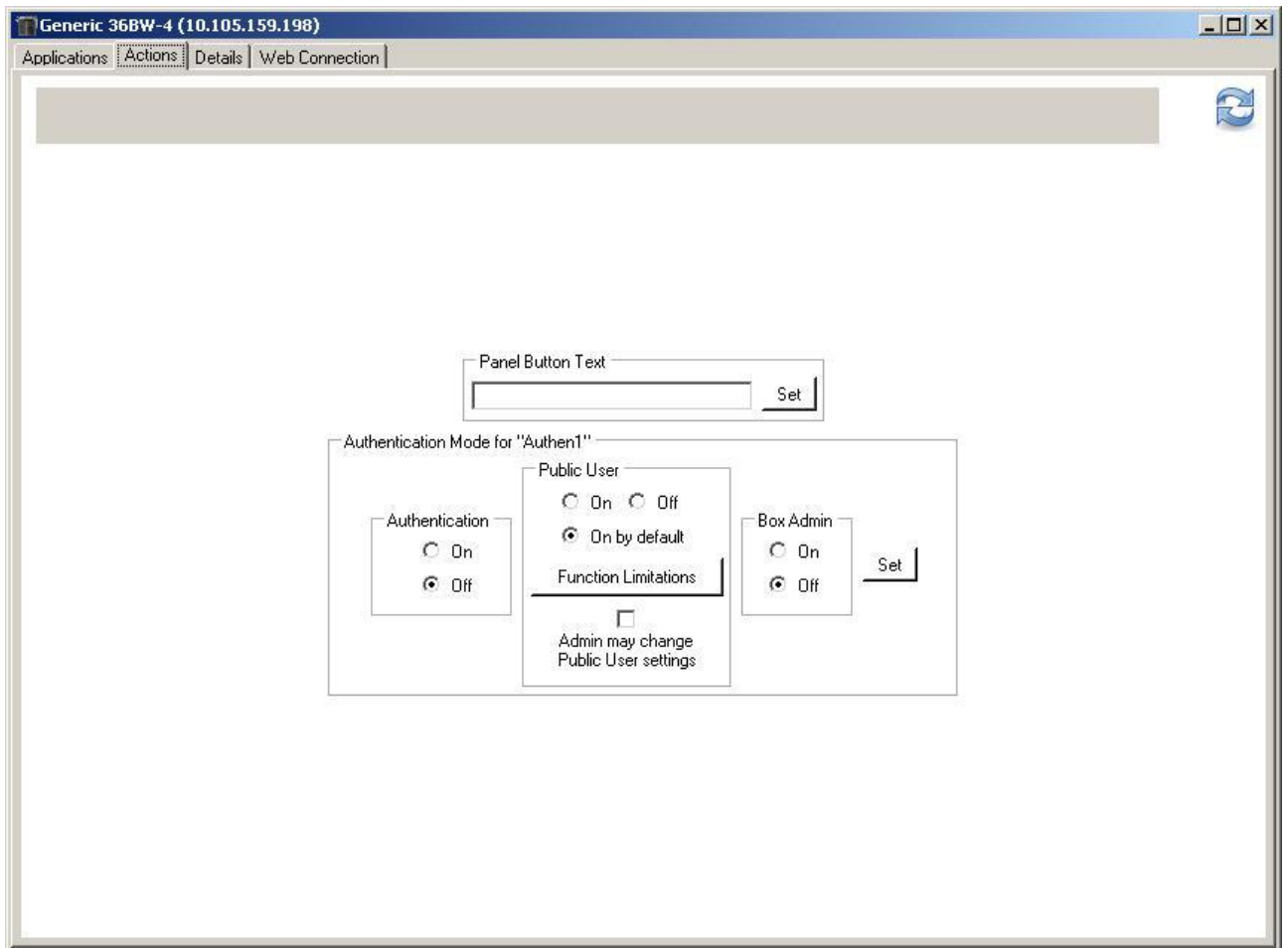
☒ Off

Set

(4) When Authentication Mode is to be changed, change On/Off and click on set button. Note: When Public User and Box Admin login enable/disable need to be changed, first turn off MFP authentication mode and then change Public User, Box Admin to authentication On.

### 3.6 Gets/Sets Panel Button (External Apps Button) Name

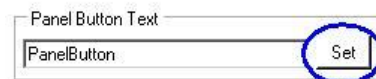
(1) Select MFP Actions Tab screen.



(2) It will display the Panel Button Name.



(3) Enter changed Panel Button Name and click Set button.

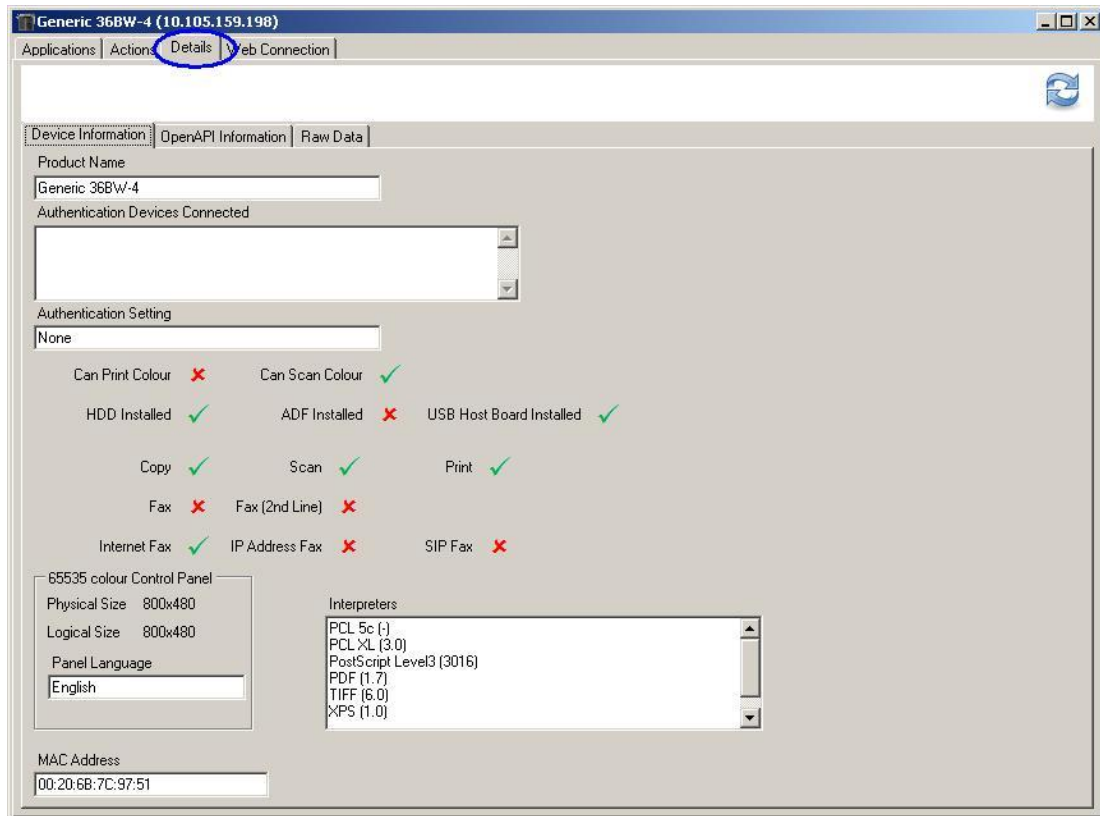




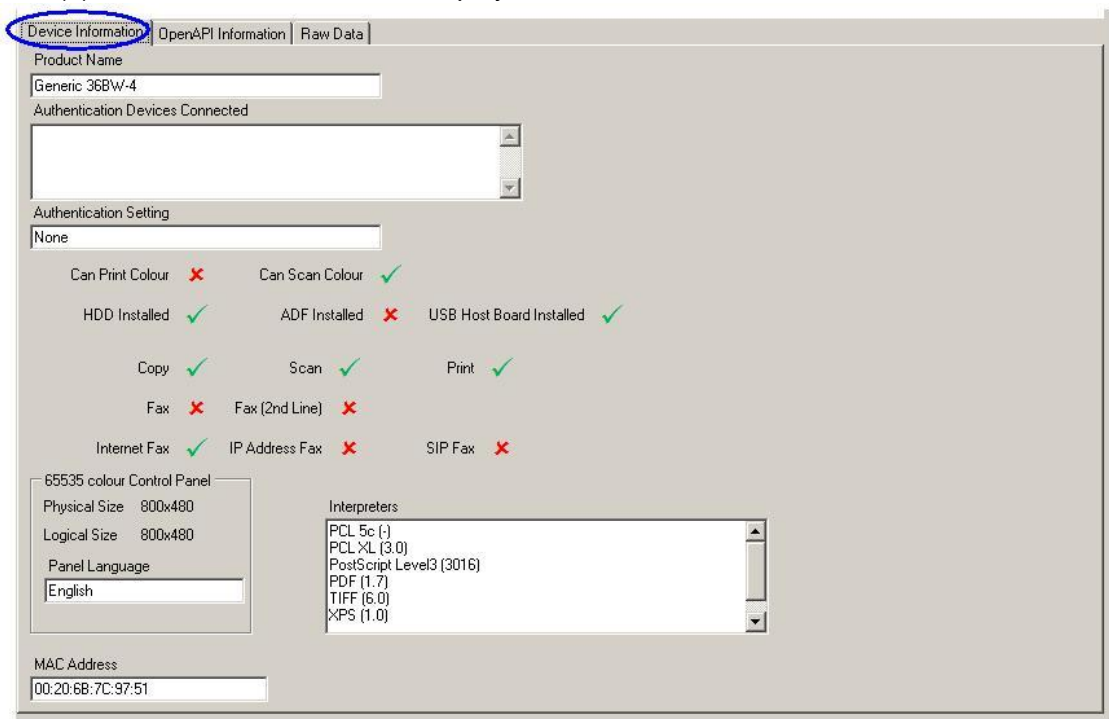
**KONICA MINOLTA, INC. OpenAPI Project**  
**-----Strictly Confidential-----**

### 3.7 Gets MFP Detail Information

(1) Select Details Tab screen.



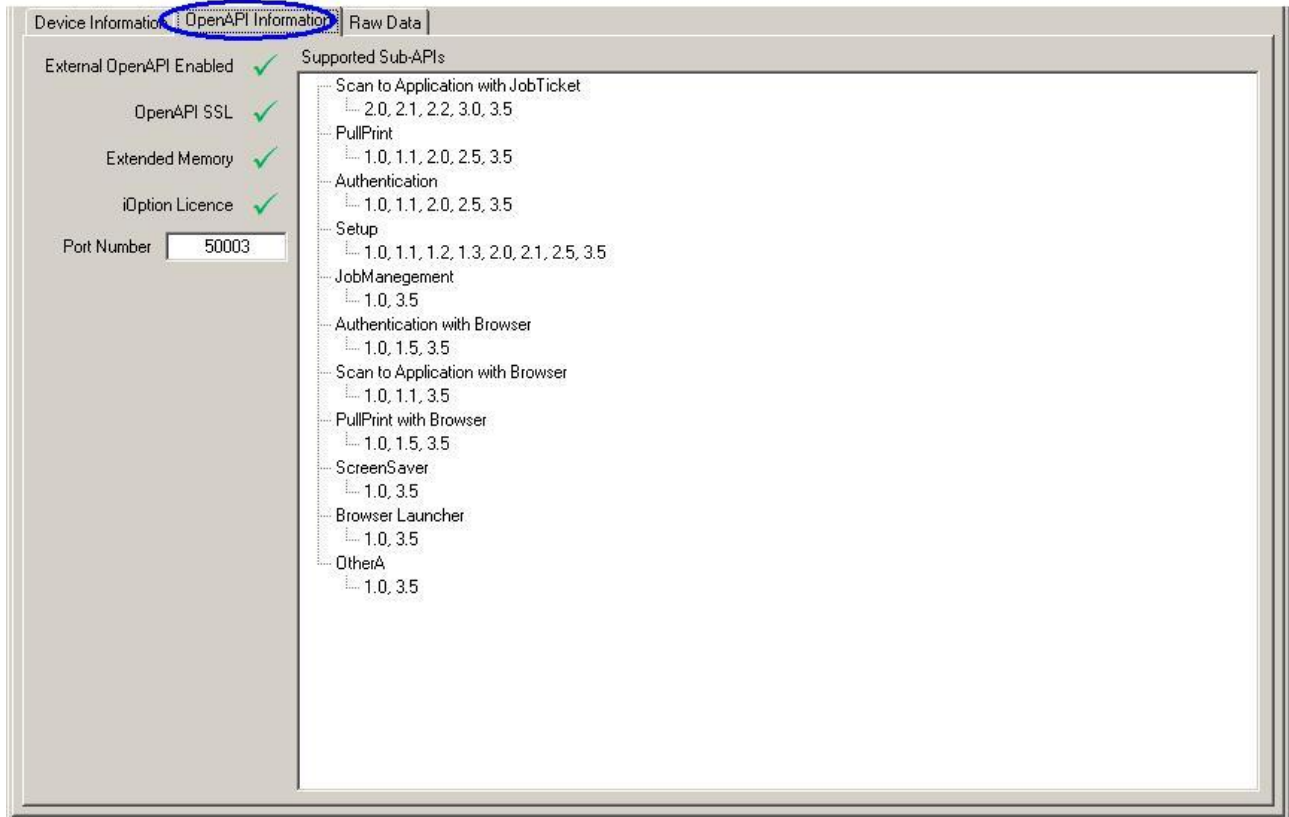
(2) MFP Detail Information is displayed.





**KONICA MINOLTA, INC. OpenAPI Project**  
**-----Strictly Confidential-----**

(4) OpenAPI Information is displayed



(5) Raw Data is displayed,

